

May-Way Farms

NINTH ANNUAL PRODUCTION SALE



MARCH 14 2020

5:30 PM CST BALDWIN CITY, KS

Sale Info

SALE STAFF

Col Jered Shipman	806.983.7226	Auctioneer
JW Brune	785.865.6624	Midwest Messenger
Jeff Mafi	816.344.4266	American Angus Assn
Rick Cozzitorto	785.840.5108	Kansas Stockman
Jim Hoffman	913.370.5691	Consultant
Raymond Gonnet	712.249.2009	Consultant
Justin Christie	785.979.4361	Consultant
John Navinsky	913.775.0427	Consultant

SALE DAY PHONES

Jason Flory	785.979.2183
Kenzie Flory	785.840.7357
Caleb Flory	785.979.1851
Jamie Kapelle	785.979.1056

SALE LOCATION

Jason and Wendy's House: 576 E 1260 Rd, Baldwin City, KS 66006

DIRECTIONS

>>>GPS WILL SOMETIMES GIVE INCORRECT DIRECTIONS. PLEASE CONFIRM GPS DIRECTIONS WITH WHAT IS LISTED BELOW<<<

From Lawrence/K10 Highway: Continue south on 59 Highway, exit onto N 650 Road. Take a right, then immediate left onto E 1250 Road. Watch for signs.

From 59/56 Junction: Go north on E 1260th or E 1250 access roads. Continue until you reach 550 Road. Watch for signs.

ONLINE BIDDING

LIVEAUCTIONS.TV will provide real time bidding. Live streaming of the auction will be available to bid on animals if you are unable to attend the sale. Visit www.liveauctions.tv or contact Ben Gleason at 785.640.9390 for more details and information.

LiveAuctions.TV

Schedule

FRIDAY, MARCH 13

Cattle Available for viewing at sale site

SATURDAY, MARCH 14

2:00 PM Cattle available for viewing at sale site

5:00 PM Complimentary dinner provided by Merck Animal Health

5:30 PM Sale Begins

TERMS AND CONDITIONS

Cattle will sell under the standard Terms and Conditions as recommended by the American Angus Association. Terms are CASH. All cattle are to be paid for sale day and will not be released until settlement has been made.

LIABILITY

All persons who attend the sale do so at their own risk, May-Way Farms, Flory & Associates and the Flory family assume no liability, legal or otherwise for any accidents or property loss which may occur.

HERD HEALTH

All lots have been checked for correct parent verification and are AM, CA & NH free by pedigree or test. All bulls have passed a fertility exam and have been vaccinated. All cattle will be accompanied by proper health certificates for immediate shipment.

RETAINED INTEREST

Sellers will be retaining 1/3 semen revenue sharing interest in every bull selling unless otherwise stated. Full possession and salvage value belonging to the purchaser unless otherwise stated. Females sell in their entirety.

SUPPLEMENTAL INFORMATION

A supplement sheet will be available sale day with complete and up-to-date information. Announcements from the auction block take precedence over printed information.

FIRST BREEDING SEASON GUARENTEE

All bulls selling for over \$3000 are fully guarenteed the first breeding season. A breeding season is defined as the 90 day period following the first turnout of the bull. This is a fertility guarentee. This guarentee does NOT cover non breeding injuries resulting from accident or gross negligence. If a replacement bull is available, he will be provided or if the buyer prefers, credit toward one bull will be given in the following sale, less salvage value of the injured bull. All injured bulls must be diagnosed by a licensed veterinarian. Please notify us as soon as possible should injury occur and prior to the injured bull being sold for salvage.

TRUCKING

May-Way Farms will cover the first 500 miles of delivery to centralized locations. **All bulls picked up within 48 hours of sale will be discounted \$50.** Bulls can be kept at MW until April 1st @ the **risk of the new owner.**

VIDEOS

All lot videos can be viewed at www.maywayfarms.com

EPDS

All bulls have genomic enhanced EPDs with Angus GS and listed EPDs are current as of 02/13/2020. Bulls that have achieved the Certified Angus Beef Targeting the Brand Logo will be denoted aside each lot. This is earned when genetic predictions are breed average or higher for Marbling EPD and Grid Value (\$G).

HOW DO THEY COMPARE?

	CED	BW	WW	YW
ANGUS BREED AVG	+6	+1.2	54	96
MW 2020 SALE BULLS	+7	+1.2	65	115



ANGUSGS
Powered by Neogen GeneSeek

Welcome

Welcome to the 9th annual May-Way Farms Bull & Female sale! We want to start off by thanking you for taking the time to look through our offering and the interest in our program. There are a variety of pedigrees to choose from and genetics that will certainly work for a variety of environments and programs depending on specific goals for your personal operation.

Last year at this time we were being faced with one of the coldest, wettest winters we had seen in decades. Since the start of 2020, we have been shown history can almost repeat itself! Spring calving has begun and we have been busy preparing for the sale. With the difficulties the weather has faced us, it has been a slight challenge getting bulls repictured. Although there were many bulls that were pictured early when they were greener, we feel that they are really turning the corner. As always, the Fall bulls were pastured on fescue with protein supplement. The Spring bulls were weaned in September and after a little fall rain were kicked back out to grass to help preserve feed. Both sets of bulls were put on a high roughage diet while on pasture starting just after Thanksgiving. Currently the bulls are still on pasture as we feel exercise is critically important for their development. We strive develop our bulls to be FIT not FAT.

Although we aren't offering any females in the sale this year, we have decided to offer a flush on one of our most prominent donors, May-Way Empress 1372. This might be one of the most unique opportunities we have offered, as this donor has been mated multiple ways and it has always worked!

As many of you know, we are a family ran cattle and row crop operation. I would like to my family for all they do and am grateful for their involvement. This farm and these cows are our life, and we are thankful to be a part of such a great industry.

We invite you to stop in any time prior to the sale to view the bulls and females. Videos on all lots will be available for viewing on our website, www.maywayfarms.com. Please do not hesitate to contact myself or any of the representatives listed with any questions you may have or assistance needed. We look forward to seeing you March 14th!

Thank you,

Jason Flory

The Flory Family



YEARLING BULLS

1 **MAY-WAY 316 922**

03/03/19 19647006 Tattoo: 922 Angus

Connealy Capitalist 028
LD Capitalist 316
LD Dixie Erica 2053

May-Way Perfection 384
May-Way Christy 1546
May-Way Christy 1387

GED	+13
BW	-0.9
WW	+57
YW	+97
Milk	+26

ActualBW	AdjWW	AdjYW	\$W	\$B
55	755		\$68	\$112



2 **MAY-WAY 316 901**

03/04/19 19646966 Tattoo: 901 Angus

Connealy Capitalist 028
LD Capitalist 316
LD Dixie Erica 2053

Connealy Black Granite
May-Way Ever Entense 601
May-Way Ever Entense 022

GED	+2
BW	+2.6
WW	+84
YW	+151
Milk	+26

ActualBW	AdjWW	AdjYW	\$W	\$B
74	912		\$83	\$180



3 **MAY-WAY 316 910**

03/02/19 19647028 Tattoo: 910 Angus

Connealy Capitalist 028
LD Capitalist 316
LD Dixie Erica 2053

May-Way Modified 055
May-Way Primrose 234
May-Way Primrose 077

GED	+13
BW	-0.2
WW	+65
YW	+113
Milk	+28

ActualBW	AdjWW	AdjYW	\$W	\$B
70	743		\$73	\$143



4 **MAY-WAY 316 906**

02/28/19 19647013 Tattoo: 906 Angus

Connealy Capitalist 028
LD Capitalist 316
LD Dixie Erica 2053

Connealy Consensus 7229
May-Way Ann 1373
May-Way Ann 966

GED	+2
BW	+2.1
WW	+72
YW	+127
Milk	+41

ActualBW	AdjWW	AdjYW	\$W	\$B
78	767		\$91	\$158

5 **MAY-WAY 316 915**

03/06/19 19646973 Tattoo: 915 Angus

Connealy Capitalist 028
LD Capitalist 316
LD Dixie Erica 2053

Jindra Acclaim
May-Way Ever Entense E41
May-Way Ever Entense 022

GED	+9
BW	-1.6
WW	+54
YW	+101
Milk	+34

ActualBW	AdjWW	AdjYW	\$W	\$B
60	779		\$69	\$131

YEARLING BULLS

6 MAY-WAY OFFROAD 934

03/26/19 19637108 Tattoo: 934 Angus

Jindra Acclaim
May-Way Offroad 719
May-Way Blackcapette 207

PVF Insight 0129
May-Way Blackcapette 663
May-Way Blackcapette 840

GED	+3
BW	+3.0
WW	+71
YW	+127
Milk	+22

Actual BW	Adj WW	Adj YW	\$W	\$B
73	725		\$59	\$163



7 MAY-WAY OFFROAD 933

03/09/19 19637117 Tattoo: 933 Angus

Jindra Acclaim
May-Way Offroad 719
May-Way Blackcapette 207

Barstow Cash
May-Way Lucy 505
May-Way Lucy 215

GED	+5
BW	+1.8
WW	+76
YW	+135
Milk	+20

Actual BW	Adj WW	Adj YW	\$W	\$B
70	682		\$68	\$151



8 MAY-WAY PERFECTION 908

03/01/19 19637106 Tattoo: 908 Angus

S A V Pioneer 7301
May-Way Perfection 384
May-Way Empress 811

PVF Insight 0129
May-Way Jilt 602
May-Way Jilt 042

GED	+7
BW	+0.1
WW	+57
YW	+102
Milk	+31

Actual BW	Adj WW	Adj YW	\$W	\$B
69	737		\$71	\$110

9 MAY-WAY PERFECTION 926

03/20/19 19637105 Tattoo: 926 Angus

S A V Pioneer 7301
May-Way Perfection 384
May-Way Empress 811

May-Way Eagle Eye 104
May-Way Lucy 517
May-Way Lucy 917

GED	+6
BW	+2.5
WW	+70
YW	+126
Milk	+20

Actual BW	Adj WW	Adj YW	\$W	\$B
74	652		\$64	\$125



May-Way Perfection 384

Service sire to Lots 8-11, 31, 57-58.

10 MAY-WAY PERFECTION 925

03/10/19 19637104 Tattoo: 925 Angus

S A V Pioneer 7301
May-Way Perfection 384
May-Way Empress 811

Barstow Cash
May-Way Empress 511
May-Way Empress 236

GED	+10
BW	+1.2
WW	+69
YW	+127
Milk	+29

Actual BW	Adj WW	Adj YW	\$W	\$B
76	680		\$75	\$157

YEARLING BULLS



13 **MAY-WAY ACCLAIM 904** 

03/02/19 19649506 Tattoo: 904 Angus

Jindra 3rd Dimension
Jindra Acclaim
Jindra Blackbird Lassy 1111

GED	+7
BW	+2.0
WW	+74
YW	+132
Milk	+32

Connealy Black Granite
May-Way Ever Entense 601
May-Way Ever Entense 022

ActualBW	AdjWW	AdjYW	\$W	\$B
71	700		\$81	\$185

11 **MAY-WAY PERFECTION 923**

02/28/19 19637113 Tattoo: 923 Angus

S A V Pioneer 7301
May-Way Perfection 384
May-Way Empress 811

GED	+8
BW	+1.0
WW	+79
YW	+132
Milk	+18

May-Way Equity
May-Way Sara 1645
May-Way Sara 162

ActualBW	AdjWW	AdjYW	\$W	\$B
59	785		\$74	\$110

14 **MAY-WAY CHARM 928** 

03/11/19 19649406 Tattoo: 928 Angus

Silveiras Conversion 8064
BUBS Southern Charm AA31
Hickory Hill Erica 009

GED	+6
BW	+3.1
WW	+64
YW	+112
Milk	+30

May-Way Perfection 384
May-Way Primrose 614
May-Way Primrose 403

ActualBW	AdjWW	AdjYW	\$W	\$B
81	701		\$67	\$163

12 **MAY-WAY EQUITY 921**

04/01/19 19637110 Tattoo: 921 Angus

May-Way Equity
May-Way Equity D44
May-Way Lass 829

GED	+7
BW	+1.1
WW	+76
YW	+134
Milk	+22

Connealy Black Granite
May-Way Edella E17
May-Way Edella 653

ActualBW	AdjWW	AdjYW	\$W	\$B
70	805		\$75	\$139

15 **MAY-WAY PLAY IT SAFE 907**

02/21/19 19637101 Tattoo: 907 Angus

May-Way Perfection 384
May-Way Play It Safe
May-Way Empress 1372

GED	+14
BW	-0.9
WW	+50
YW	+76
Milk	+18

S A V Bismarck 5682
May-Way Primrose 113
May-Way Primrose 702

ActualBW	AdjWW	AdjYW	\$W	\$B
75	660		\$55	\$112



18 MONTH OLD BULLS



16 **MAY-WAY EQUITY 1813** 

10/05/18 19462822 Tattoo: 1813 Angus

Barstow Cash	GED	-1
May-Way Equity	BW	+4.0
EXG Primrose P054 R3	WW	+86
May-Way Perfection 384	YW	+144
May-Way Primrose Lady 1536	Milk	+20
May-Way Primrose Lady 1357		

ActualBW	AdjWW	AdjYW	\$W	\$B
76	805	1328	\$69	\$153



19 **MAY-WAY EQUITY 1816** 

09/26/18 19664337 Tattoo: 1816 Angus

Barstow Cash	GED	+4
May-Way Equity	BW	+1.7
EXG Primrose P054 R3	WW	+61
May-Way Rocket Man	YW	+111
May-Way Cassie 328	Milk	+25
May-Way Cassie 132		

ActualBW	AdjWW	AdjYW	\$W	\$B
75	781	1325	\$78	\$143

17 **MAY-WAY EQUITY 1845** 

10/25/18 19462833 Tattoo: 1845 Angus

Barstow Cash	GED	+7
May-Way Equity	BW	+0.6
EXG Primrose P054 R3	WW	+61
S A V Brilliance 8077	YW	+101
May-Way Lady 1431	Milk	+32
Top Line Lady 9115		

ActualBW	AdjWW	AdjYW	\$W	\$B
59	726	1171	\$75	\$102

20 **MAY-WAY EQUITY 1819** 

11/01/18 19462821 Tattoo: 1819 Angus

Barstow Cash	GED	+11
May-Way Equity	BW	-0.9
EXG Primrose P054 R3	WW	+39
EXAR Totally Tuned 71281	YW	+77
May-Way Erica 202	Milk	+22
G&J Erica 825		

ActualBW	AdjWW	AdjYW	\$W	\$B
60	623	1135	\$34	\$116

18 **MAY-WAY EQUITY 1841** 

11/11/18 19462849 Tattoo: 1841 Angus

Barstow Cash	GED	+11
May-Way Equity	BW	+0.8
EXG Primrose P054 R3	WW	+62
EXAR Denver 2002B	YW	+106
May-Way Lady Sky 499	Milk	+19
May-Way Lady Sky 918		

ActualBW	AdjWW	AdjYW	\$W	\$B
64	719	1279	\$57	\$115

21 **MAY-WAY EQUITY 1818** 

10/05/18 19462836 Tattoo: 1818 Angus

Barstow Cash	GED	+2
May-Way Equity	BW	+2.6
EXG Primrose P054 R3	WW	+75
Connealy Black Granite	YW	+128
May-Way Primrose Lady 1643	Milk	+23
May-Way Primrose Lady 862		

ActualBW	AdjWW	AdjYW	\$W	\$B
71	724	1271	\$72	\$149

18 MONTH OLD BULLS

22 MAY-WAY EQUITY 1822

10/05/18 19462815 Tattoo: 1822 Angus

Barstow Cash
May-Way Equity
EXG Primrose P054 R3

S A V Bismarck 5682
May-Way Christy 091
OBCC Christy 71T GCC

GED	+5
BW	+1.3
WW	+67
YW	+114
Milk	+18

ActualBW	AdjWW	AdjYW	\$W	\$B
74	688	1334	\$59	\$120



LOT 22

23 MAY-WAY EPIC 1844

10/20/18 19463904 Tattoo: 1844 Angus

Varilek Product 2010 04
3F Epic 4631
Zebo Queen 1072

May-Way Equity
May-Way Christy 1678
May-Way Christy 1484

GED	+5
BW	+0.3
WW	+93
YW	+157
Milk	+20

ActualBW	AdjWW	AdjYW	\$W	\$B
61	751	1309	\$94	\$137



LOT 23

24 MAY-WAY EPIC 1828

09/25/18 19665555 Tattoo: 1828 Angus

Varilek Product 2010 04
3F Epic 4631
Zebo Queen 1072

S A V Net Worth 4200
May-Way Lucy 913
EXG Lucy R126 R3

GED	+6
BW	+2.1
WW	+61
YW	+108
Milk	+31

ActualBW	AdjWW	AdjYW	\$W	\$B
59	759	1295	\$70	\$100

26 MAY-WAY HOMEGROWN 1803

10/30/18 19462861 Tattoo: 1803 Angus

CTS Remedy 1T01
Ellingson Homegrown 6035
EA Blanche 4137

May-Way Rocket Man
May-Way Jilt 315
May-Way Jilt 166

GED	+6
BW	+0.7
WW	+62
YW	+111
Milk	+27

ActualBW	AdjWW	AdjYW	\$W	\$B
75	864	1427	\$70	\$143

25 MAY-WAY HOMEGROWN 1808

10/03/18 19462821 Tattoo: 1808 Angus

CTS Remedy 1T01
Ellingson Homegrown 6035
EA Blanche 4137

KR Gavel 1057
May-Way Jilt 1435
May-Way Jilt 910

GED	+9
BW	-1.9
WW	+57
YW	+109
Milk	+34

ActualBW	AdjWW	AdjYW	\$W	\$B
66	732	1268	\$71	\$138



LOT 25

18 MONTH OLD BULLS



LOT 27

27 MAY-WAY ACCLAIM 1826

10/18/18 19462820 Tattoo: 1826 Angus

Jindra 3rd Dimension
Jindra Acclaim
Jindra Blackbird Lassy 1111

S A V Pioneer 7301
May-Way Ever Entense 081
Bohi Ever Entense 635

GED	+15
BW	-1.3
WW	+57
YW	+112
Milk	+32

ActualBW	AdjWW	AdjYW	\$W	\$B
65	745	1241	\$64	\$161



LOT 29

29 MAY-WAY ACCLAIM 1847

10/23/18 19462830 Tattoo: 1847 Angus

Jindra 3rd Dimension
Jindra Acclaim
Jindra Blackbird Lassy 1111

Kramers Apollo 317
May-Way Lady 1534
May-Way Lady 1354

GED	+6
BW	+0.3
WW	+70
YW	+137
Milk	+40

ActualBW	AdjWW	AdjYW	\$W	\$B
58	747	1297	\$82	\$185



LOT 28

28 MAY-WAY ACCLAIM 1834

10/10/18 19462819 Tattoo: 1834 Angus

Jindra 3rd Dimension
Jindra Acclaim
Jindra Blackbird Lassy 1111

SoydGen Doc 9017
May-Way Primrose 1244
EXG Primrose P054 R3

GED	+8
BW	+1.2
WW	+65
YW	+130
Milk	+31

ActualBW	AdjWW	AdjYW	\$W	\$B
66	671	1308	\$67	\$197

30 MAY-WAY ACCLAIM 1838

09/30/18 19462831 Tattoo: 1838 Angus

Jindra 3rd Dimension
Jindra Acclaim
Jindra Blackbird Lassy 1111

EXAR Denver 2002B
May-Way Katinka 1415
May-Way Katinka 063

GED	+11
BW	-1.2
WW	+55
YW	+112
Milk	+29

ActualBW	AdjWW	AdjYW	\$W	\$B
65	740	1297	\$59	\$186

31 MAY-WAY PERFECTION 1846

11/09/18 19462843 Tattoo: 1846 Angus

S A V Pioneer 7301
May-Way Perfection 384
May-Way Empress 811

Barstow Cash
May-Way Primrose 509
EXG Primrose P054 R3

GED	+12
BW	-1.3
WW	+76
YW	+129
Milk	+21

ActualBW	AdjWW	AdjYW	\$W	\$B
51	672	1206	\$79	\$132

32 MAY-WAY PRIME CUT 1835

10/13/18 19462827 Tattoo: 1835 Angus

Vermilion Sirloin
 HA Prime Cut 4493
 HA Miss Blackcap 9127
 KR Gavel 1057
 May-Way Entense 1445
 May-Way Ever Entense 081

GED	+11
BW	+1.5
WW	+74
YW	+126
Milk	+31

ActualBW	AdjWW	AdjYW	\$W	\$B
71	739	1294	\$84	\$125



LOT 32

33 MAY-WAY PRIME CUT 1802

10/05/18 19462813 Tattoo: 1802 Angus

Vermilion Sirloin
 HA Prime Cut 4493
 HA Miss Blackcap 9127
 KR Gavel
 May-Way Lucy 1459
 May-Way Lucy 952

GED	+14
BW	+0.2
WW	+54
YW	+102
Milk	+20

ActualBW	AdjWW	AdjYW	\$W	\$B
65	646	1254	\$48	\$122



LOT 33



LOT 34

35 MAY-WAY PRIME CUT 1839

10/12/18 19462828 Tattoo: 1839 Angus

Vermilion Sirloin
 HA Prime Cut 4493
 HA Miss Blackcap 9127
 Barstow Cash
 May-Way Lady 1354
 Top Line Lady 9115

GED	+15
BW	+1.1
WW	+49
YW	+86
Milk	+19

ActualBW	AdjWW	AdjYW	\$W	\$B
71	739	1294	\$84	\$125

34 MAY-WAY PRIME CUT 1807

10/13/18 19462814 Tattoo: 1807 Angus

Vermilion Sirloin
 HA Prime Cut 4493
 HA Miss Blackcap 9127
 S A V Angus Valley 1867
 May-Way Lady 1390
 EXAR Lady P470 R3

GED	+5
BW	+2.4
WW	+74
YW	+130
Milk	+25

ActualBW	AdjWW	AdjYW	\$W	\$B
79	701	1373	\$71	\$144

36 MAY-WAY UNANIMOUS 1825

10/16/18 19481939 Tattoo: 1825 Angus

Visiontopline Royal Stockman
 Vision Unanimous 1418
 Vision Edella 665
 S A V Providence
 May-Way Sara 162
 AVF Sara 1027

GED	+4
BW	+3.4
WW	+67
YW	+122
Milk	+31

ActualBW	AdjWW	AdjYW	\$W	\$B
78	790	1352	\$67	\$113



37 MAY-WAY UNANIMOUS 1805
 09/26/18 19481933 Tattoo: 1805 Angus

Visiontopline Royal Stockman	GED	+4
Vision Unanimous 1418	BW	+1.2
Vision Edella 665	WW	+62
Soo Line Motive 9016	YW	+101
May-Way Empress 1372	Milk	+21
May-Way Empress 946		

ActualBW	AdjWW	AdjYW	\$W	\$B
60	658	1248	\$67	\$100

38 MAY-WAY UNANIMOUS 1814
 10/08/18 19535107 Tattoo: 1814 Angus

Visiontopline Royal Stockman	GED	+8
Vision Unanimous 1418	BW	-0.1
Vision Edella 665	WW	+64
S A V Final Answer 0035	YW	+115
May-Way Empress 032	Milk	+19
May-Way Empress 809		

ActualBW	AdjWW	AdjYW	\$W	\$B
69	641	1257	\$62	\$107

39 MAY-WAY UNANIMOUS 1804
 10/12/18 19481934 Tattoo: 1804 Angus

Visiontopline Royal Stockman	GED	+6
Vision Unanimous 1418	BW	+1.1
Vision Edella 665	WW	+52
May-Way Modified 701	YW	+91
May-Way Lady Erica 1140	Milk	+25
May-Way Lady Erica 661		

ActualBW	AdjWW	AdjYW	\$W	\$B
68	808	1331	\$55	\$101



Donor dam to Lot 37

40 MAY-WAY UNANIMOUS 1812
 10/20/18 19481932 Tattoo: 1812 Angus

Visiontopline Royal Stockman	GED	+3
Vision Unanimous 1418	BW	+2.3
Vision Edella 665	WW	+71
May-Way Eagle Eye 104	YW	+130
May-Way Primrose 1417	Milk	+25
May-Way Primrose 066		

ActualBW	AdjWW	AdjYW	\$W	\$B
68	799	1338	\$69	\$123



41 MAY-WAY UNANIMOUS 1827
 10/18/18 19481928 Tattoo: 1827 Angus

Visiontopline Royal Stockman	GED	+1
Vision Unanimous 1418	BW	+3.7
Vision Edella 665	WW	+60
May-Way Modified 701	YW	+114
May-Way Blackbird 411	Milk	+27
May-Way Blackbird 1137		

ActualBW	AdjWW	AdjYW	\$W	\$B
76	744	1314	\$52	\$120

18 MONTH OLD BULLS



May-Way Jilt 042

Donor dam to Lots 42-44



LOT 42

44 MAY-WAY UNANIMOUS 1829

10/20/18 19481938 Tattoo: 1829 Angus

Visiontopline Royal Stockman
Vision Unanimous 1418
Vision Edella 665

S A V Pioneer 7301
May-Way Jilt 042
May-Way Jilt 708

GED	+4
BW	+1.7
WW	+69
YW	+120
Milk	+23

ActualBW	AdjWW	AdjYW	\$W	\$B
65	731	1288	\$72	\$107



LOT 45

42 MAY-WAY UNANIMOUS 1824

10/27/18 19481936 Tattoo: 1824 Angus

Visiontopline Royal Stockman
Vision Unanimous 1418
Vision Edella 665

S A V Pioneer 7301
May-Way Jilt 042
May-Way Jilt 708

GED	-4
BW	+3.4
WW	+82
YW	+149
Milk	+18

ActualBW	AdjWW	AdjYW	\$W	\$B
85	882	1421	\$68	\$162

45 MAY-WAY UNANIMOUS 1817

10/27/18 19481940 Tattoo: 1817 Angus

Visiontopline Royal Stockman
Vision Unanimous 1418
Vision Edella 665

S A V Bismarck 5682
May-Way Primrose 116
May-Way Primrose 702

GED	-3
BW	+5.2
WW	+79
YW	+132
Milk	+17

ActualBW	AdjWW	AdjYW	\$W	\$B
85	850	1237	\$62	\$130

43 MAY-WAY UNANIMOUS 1815

10/17/18 19481935 Tattoo: 1815 Angus

Visiontopline Royal Stockman
Vision Unanimous 1418
Vision Edella 665

S A V Pioneer 7301
May-Way Jilt 042
May-Way Jilt 708

GED	-1
BW	+1.2
WW	+68
YW	+112
Milk	+20

ActualBW	AdjWW	AdjYW	\$W	\$B
75	694	1244	\$67	\$108

46 MAY-WAY SENSATION 1821

10/17/18 19597964 Tattoo: 1821 Angus

S A V Registry 2831
S A V Sensation 5615
S A V Blackcap May 4136

S A V Pioneer 7301
May-Way Jilt 042
May-Way Jilt 708

GED	+7
BW	+0.5
WW	+54
YW	+91
Milk	+19

ActualBW	AdjWW	AdjYW	\$W	\$B
75	722	1239	\$51	\$108



47 MAY-WAY INCEPTION 1842

10/13/18 19462174 Tattoo: 1842 Angus

PVF Insight 0129	GED +8
May-Way Inception 665	
May-Way Empress 029	
May-Way Equity	BW +1.0
May-Way Ever Entense 1631	WW +66
May-Way Ever Entense 1473	YW +124
	Milk +16

ActualBW	AdjWW	AdjYW	\$W	\$B
55	751	1316	\$60	\$147



50 MAY-WAY BLACK GRANITE 1837

11/20/18 19462824 Tattoo: 1837 Angus

Connealy Black Granite	GED +1
May-Way Black Granite 1583	
May-Way Lucy 913	
VAR Rocky 80029	BW +3.0
May-Way Primrose 217	WW +68
May-Way Primrose 654	YW +119
	Milk +20

ActualBW	AdjWW	AdjYW	\$W	\$B
77	808	1370	\$60	\$137

48 MAY-WAY INCEPTION 1843

11/02/18 19462840 Tattoo: 1843 Angus

PVF Insight 0129	GED +5
May-Way Inception 665	
May-Way Empress 029	
May-Way Equity	BW +1.5
May-Way Entense 1652	WW +67
May-Way Entense 1445	YW +112
	Milk +24

ActualBW	AdjWW	AdjYW	\$W	\$B
60	797	1295	\$67	\$93

51 MAY-WAY BLACK GRANITE 1820

11/01/18 19462837 Tattoo: 1820 Angus

Connealy Black Granite	GED +0
May-Way Black Granite 1583	
May-Way Lucy 913	
VAR Rocky 80029	BW +3.6
May-Way Primrose 205	WW +65
May-Way Primrose 654	YW +114
	Milk +19

ActualBW	AdjWW	AdjYW	\$W	\$B
64	766	1324	\$52	\$138

49 MAY-WAY INCEPTION 1836

11/13/18 19462839 Tattoo: 1836 Angus

PVF Insight 0129	GED +6
May-Way Inception 665	
May-Way Empress 029	
May-Way Perfection 384	BW +3.7
May-Way Jilt 1662	WW +67
May-Way Jilt 490	YW +124
	Milk +23

ActualBW	AdjWW	AdjYW	\$W	\$B
61	660	1182	\$55	\$136

52 MAY-WAY ROUNDTABLE 1833

10/19/18 19645762 Tattoo: 1833 Angus

Plainview Lutton E102	GED +3
S&R Roundtable J328	
PVF Proven Queen 786	
May-Way Rocketman	BW +4.8
May-Way Sara 312	WW +56
May-Way Sara 162	YW +100
	Milk +30

ActualBW	AdjWW	AdjYW	\$W	\$B
70	631	1252	\$53	\$119

TWO YEAR OLD BULLS

53 MAY-WAY INCEPTION 859

03/10/18 19317602 Tattoo: 859 Angus

PVF Insight 0129	GED	+8
May-Way Inception 665	BW	+1.2
May-Way Empress 029	WW	+55
May-Way Renegade 252	YW	+105
May-Way Elite 607	Milk	+31
May-Way Elite 229		

ActualBW	AdjWW	AdjYW	\$W	\$B
61	691	1323	\$62	\$140

57 MAY-WAY PERFECTION 817

04/17/18 19317593 Tattoo: 817 Angus

S A V Pioneer 7301	GED	+12
May-Way Perfection 384	BW	+0.6
May-Way Empress 811	WW	+53
Rito 112 of 2536 Rito 616	YW	+96
May-Way Katinka 1216	Milk	+20
EXG Katinka P774 R3		

ActualBW	AdjWW	AdjYW	\$W	\$B
76	722	1360	\$50	\$121

54 MAY-WAY INCEPTION 803

03/12/18 19317596 Tattoo: 803 Angus

PVF Insight 0129	GED	+0
May-Way Inception 665	BW	+2.2
May-Way Empress 029	WW	+49
May-Way Perfection 384	YW	+95
May-Way Christy 1546	Milk	+26
May-Way Christy 1387		

ActualBW	AdjWW	AdjYW	\$W	\$B
60	707	1331	\$49	\$130

58 MAY-WAY PERFECTION 818

04/01/18 19317592 Tattoo: 818 Angus

S A V Pioneer 7301	GED	+15
May-Way Perfection 384	BW	-0.6
May-Way Empress 811	WW	+48
Boyd Resume 9008	YW	+86
May-Way Lucy 215	Milk	+29
May-Way Lucy 094		

ActualBW	AdjWW	AdjYW	\$W	\$B
69	709	1219	\$60	\$121

55 MAY-WAY BLACK GRANITE 834

04/24/18 19317608 Tattoo: 834 Angus

Connealy Black Granite	GED	+7
May-Way Black Granite 1583	BW	+0.5
May-Way Lucy 913	WW	+60
Sitz Top Game 561X	YW	+106
JMB Joette Top Game 3024	Milk	+27
JMB Joette 031		

ActualBW	AdjWW	AdjYW	\$W	\$B
74	804	1386	\$69	\$107

59 MAY-WAY PLAYBOOK 856

03/09/18 19330950 Tattoo: 856 Angus

Basin Payweight 1682	GED	+13
TEX Playbook 5437	BW	-0.6
Rita 1C34 of 9M26 Complete	WW	+56
AVF Breakout 5409	YW	+102
May-Way Ever Entense 1267	Milk	+38
May-Way Ever Entense 022		

ActualBW	AdjWW	AdjYW	\$W	\$B
65	704	1149	\$80	\$112

56 MAY-WAY BLACK GRANITE 808

03/14/18 19390344 Tattoo: 808 Angus

Connealy Black Granite	GED	+6
May-Way Black Granite 1583	BW	+1.8
May-Way Lucy 913	WW	+62
PVF Insight 0129	YW	+101
May-Way Lass 1472	Milk	+20
May-Way Lass 829		

ActualBW	AdjWW	AdjYW	\$W	\$B
68	833	1396	\$60	\$122

60 MAY-WAY RENOVATION 870

03/23/18 19326655 Tattoo: 870 Angus

MAR Innovation 251	GED	+7
May-Way Renovation 1564	BW	+1.5
May-Way Christy 103	WW	+59
KR Gabel 1057	YW	+102
May-Way Blackcap 429	Milk	+25
May-Way Blackcap 1268		

ActualBW	AdjWW	AdjYW	\$W	\$B
69	810	1407	\$60	\$125

TWO YEAR OLD & SIM ANGUS BULLS

61 MAY-WAY INSIGHT 811

03/20/18 19329740 Tattoo: 811 Angus

S A V Brilliance 8077
PVF Insight 0129
PVF Missie 790

B C Lookout 7024
Top Line Lady 9115
Gambles Lady 959

GED	+6
BW	+2.1
WW	+55
YW	+101
Milk	+27

ActualBW	AdjWW	AdjYW	\$W	\$B
76	726	1280	\$57	\$140



Top Line Lady 9115

Donor dam to Lot 61

62 MAY-WAY APOLLO 823

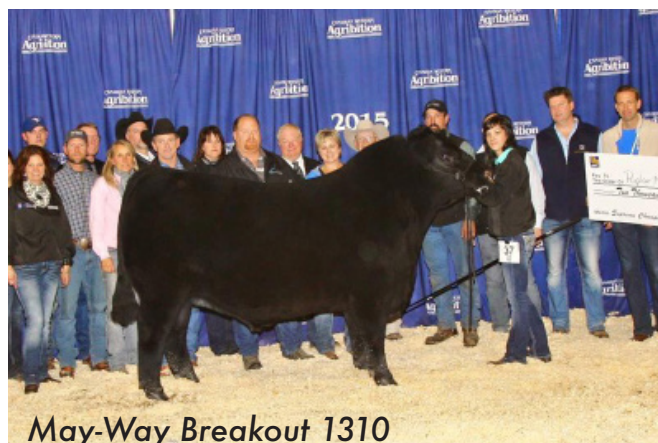
03/18/18 19317606 Tattoo: 823 Angus

Koupal Juneau 797
Kramers Apollo 317
Kramers Evergreen Erica 1204

May-Way 112 819
May-Way Lady Bando 086
May-Way Lady Bando 745

GED	+7
BW	+0.5
WW	+69
YW	+122
Milk	+25

ActualBW	AdjWW	AdjYW	\$W	\$B
78	711	1425	\$73	\$125



May-Way Breakout 1310

Past sale purchase 1310 was named Supreme Champion Bull at the 2015 Canadian Agribition for Popular Meadows Angus. Maternal brother to Lot 62.

63 MAY-WAY COWBOY CUT 1801

10/22/18 Tattoo: 1801 SimAngus

Triple C Singletary S3H
CCR Cowboy Cut 5048Z
CCR Ms 4045 Time 7322T

S A V Net Worth 4200
May-Way Lucy 917
EXG Lucy R126 R3

GED	N/A
BW	N/A
WW	N/A
YW	N/A
Milk	N/A

ActualBW	AdjWW	AdjYW	\$W	\$B
90	N/A	N/A	N/A	N/A



LOT 63

64 MAY-WAY EQUITY 1809

09/30/18 Tattoo: 1809 SimAngus

Barstow Cash
May-Way Equity
EXG Primrose P054 R3

Sim Angus 1376

GED	N/A
BW	N/A
WW	N/A
YW	N/A
Milk	N/A

ActualBW	AdjWW	AdjYW	\$W	\$B
74	N/A	N/A	N/A	N/A

65 MAY-WAY EQUITY 913

04/02/19 Tattoo: 913 SimAngus

Barstow Cash
May-Way Equity
EXG Primrose P054 R3

SimAngus 451

GED	N/A
BW	N/A
WW	N/A
YW	N/A
Milk	N/A

ActualBW	AdjWW	AdjYW	\$W	\$B
86	N/A	N/A	N/A	N/A



May-Way Unanimous E109 is a direct son out of 1372 who was a high seller in our 2019 sale going to Wheatland Cattle of Saskatchewan, Canada.



May-Way Play It Safe is a Perfection son out of 1372. Purchased by Ratliff Cattle and Competitive Egde Genetics, he was also a past high seller who has gone on to be a successful promotional sire for CEG.

66 MAY-WAY EMPRESS 1372

10/16/13 197810119 Tattoo: 1372 Angus

HF Kodiak 5R
Soo Line Motive 9016
TLA Beauty 5R

S A V Bismarck 5682
May-Way Empress 946
May-Way Empress 722

GED	+8
BW	+1.1
WW	+58
YW	+101
Milk	+21

Actual BW	Adj WW	Adj YW	\$W	\$B
70	677	1098	\$56	\$109

This might be one of the most unique genetic opportunities we have ever offered in our sales. We are offering a flush on our great 1372 donor to a bull of the buyers choice. This Motive daughter is as cowy as they come and has continued to prove herself every year since she has been in production. She's raised multiple high sellers and has proven you can breed her any way and be happy with the outcome. Being an Angus Junior National class winner herself, both her dam and grand dam had very successful show careers for Kenzie. The options with this one are endless, take advantage of this special opportunity and utilize some of our best, proven genetics!!

Special Terms: Selling the right to conventionally flush May-Way Empress 1372 to the bull of the buyers choice. Buyer pays for the flush and semen cost. Guarantee 6 transferable embryos with a cap of 12. Anything over 12 can be purchased at a prorated rate.

HERD SIRES & PAST SALE HIGHLIGHTS

MAY-WAY TOP NOTCH E108

09/29/18 19217760 Tattoo: E108 Angus

S A V Pioneer 7301
May-Way Perfection 384
May-Way Empress 811

Rito 112 or 2536 or Rito 616
May-Way Primrose 803
EXG Primrose P054 R3

GED	+7
BW	+0.4
WW	+63
YW	+109
Milk	+25

Actual BW	Adj WW	Adj YW	\$W	\$B
74	688	1277	\$69	\$104

Owned with Dameron Angus Farm, Illinois



E108

MAY-WAY UNANIMOUS E109

10/11/17 19219502 Tattoo: E109 Angus

Visiontopline Royal Stockman
Vision Unanimous 1418
Vision Edella 665

Soo Line Motive 9016
May-Way Empress 1372
May-Way Empress 946

GED	-1
BW	+3.5
WW	+88
YW	+148
Milk	+16

Actual BW	Adj WW	Adj YW	\$W	\$B
75	781	1325	\$78	\$103

Owned with Wheatland Cattle of Saskatchewan, Canada



E109

MAY-WAY OFFROAD 719

02/28/17 19011790 Tattoo: 719 Angus

Jindra 3rd Dimension
Jindra Acclaim
Jindra Blackbird Lassy 1111

VAR Rocky 80029
May-Way Blackcapette 207
May-Way Blackcapette 840

GED	+1
BW	+3.5
WW	+82
YW	+148
Milk	+19

Actual BW	Adj WW	Adj YW	\$W	\$B
70	864	1378	\$63	\$182

Owned with Bush Angus, South Dakota



719

MAY-WAY PLAY IT SAFE

10/27/15 18680798 Tattoo: 1589 Angus

S A V Pioneer 7301
May-Way Perfection 384
May-Way Empress 811

Soo Line Motive 9016
May-Way Empress 1372
May-Way Empress 946

GED	+10
BW	+0.3
WW	+61
YW	+102
Milk	+13

Actual BW	Adj WW	Adj YW	\$W	\$B
65	781	1325	\$54	\$110

Owned with Ratliff Cattle and CEG, Kansas



1589

HERD SIRES & PAST SALE HIGHLIGHTS

MAY-WAY BREAKOUT 1310

10/12/13 17843760 Tattoo: 1310 Angus

S A V Bismarck 5682
AVF Breakout 5409
VAVF Sara 0045

May-Way 112 819
May-Way Lady Bando 086
May-Way Lady Bando 745

GED	-1
BW	+4.8
WW	+64
YW	+114
Milk	+32

ActualBW	AdjWW	AdjYW	\$W	\$B
74	828	1361	\$60	\$137

Owned with Poplar Meadows Angus, British Columbia, Canada, Six Mile Ranch, Saskatchewan, Canada & Hamilton Farms, Alberta, Canada



MAY-WAY EINSTEIN

09/06/13 17843779 Tattoo: 399 Angus

S A V Bismarck 5682
S A V Brilliance 8077
S A V Blackcap May 5270

S A V Net Worth 4200
May-Way Blackcapette 840
Marands Blackcapette 5040

GED	+2
BW	+3.2
WW	+59
YW	+100
Milk	+18

ActualBW	AdjWW	AdjYW	\$W	\$B
75	781	1325	\$78	\$143

Owned with Gana Farms, Nebraska



MAY-WAY NO PRESSURE

09/24/14 18354345 Tattoo: 1439 Angus

S A V Bismarck 5682
S A V Brilliance 8077
S A V Blackcap May 5270

B C Lookout 7024
Top Line Lady 9115
Gambles Lady 959

GED	+8
BW	+1.5
WW	+54
YW	+97
Milk	+21

ActualBW	AdjWW	AdjYW	\$W	\$B
76	711	1210	\$52	\$100

Owned by Rodgers Cattle Company, Iowa



MAY-WAY MERCHANT 722

03/26/17 19007957 Tattoo: 722 Angus

Barstow Cash
May-Way Equity
EXG Primrose P054 R3

S A V Net Worth 4200
May-Way Blackcapette 840
Marands Blackcapette 5040

GED	+1
BW	+3.5
WW	+69
YW	+116
Milk	+22

ActualBW	AdjWW	AdjYW	\$W	\$B
85	N/A	N/A	\$60	\$109

MAY-WAY EQUITY D44

12/03/16 18883015 Tattoo: D44 Angus

Barstow Cash
May-Way Equity
EXG Primrose P054 R3

EXAR Midland 123
May-Way Lass 829
May-Way Lass 6618

GED	+7
BW	+1.1
WW	+61
YW	+102
Milk	+16

ActualBW	AdjWW	AdjYW	\$W	\$B
69	645	N/A	\$60	\$107

MAY-WAY PERFECTION 384

10/11/17 19219502 Tattoo: 384 Angus

S A V Final Answer 0035
S A V Pioneer 7301
S A V Blackbird 5297

EXAR Lutton 1831
May-Way Empress 811
OSU Empress 3199

GED	+11
BW	+0.6
WW	+60
YW	+104
Milk	+22

Actual BW	Adj WW	Adj YW	\$W	\$B
75	716	1175	\$64	\$109



MAY-WAY EQUITY

02/07/14 18067008 Tattoo: 448 Angus

Sitz Dash 10277
Barstow Cash
Barstow Queen W16

EXAR Sudden Impact 1537
EXG Primrose P054 R3
R3 Primrose K231

GED	+8
BW	-0.2
WW	+66
YW	+118
Milk	+21

Actual BW	Adj WW	Adj YW	\$W	\$B
70	767	1354	\$61	\$113

Owned with Krebs Ranch, Nebraska



MAY-WAY INCEPTION 665

02/14/16 18680048 Tattoo: 665 Angus

S A V Brilliance 8077
PVF Insight 0129
PVF Missie 790

May-Way Improvement 519
May-Way Empress 029
May-Way Empress 715

GED	+7
BW	+1.4
WW	+62
YW	+122
Milk	+21

Actual BW	Adj WW	Adj YW	\$W	\$B
70	N/A	N/A	\$52	\$160



MAY-WAY BLACK GRANITE 1583

10/19/15 18524893 Tattoo: 1583 Angus

Connealy Consensus 7229
Connealy Black Granite
Eura Elga of Conanga 9109

S A V Net Worth 4200
May-Way Lucy 913
EXG Lucy R126 R3

GED	+7
BW	+2.0
WW	+62
YW	+102
Milk	+15

Actual BW	Adj WW	Adj YW	\$W	\$B
80	721	1207	\$54	\$93



REFERENCE SIRES

A LD CAPITALIST 316

10/11/17 17666102 Tattoo: 316 Angus

S A V Final Answer 0035
Connealy Capitalist 028
Prides Pita of Conanga 8821

CA Future Direction 5321
LD Dixie Erica 2053
LD Dixie Erica Oar 0853

GED	+10
BW	-0.7
WW	+67
YW	+115
Milk	+30

ActualBW	AdjWW	AdjYW	\$W	\$B
78	759	1340	\$78	\$141

B ELLINGSON HOMEGROWN 6035

02/20/16 18542959 Tattoo: 6035 Angus

Connealy Thunder
CTS Remedy 1701
CTS 7V03 Bellemere Maid 9T02

Ellingson Format 2205
EA Blanche 4137
EA Blanche 1137

GED	+5
BW	+1.4
WW	+56
YW	+105
Milk	+32

ActualBW	AdjWW	AdjYW	\$W	\$B
70	921	1455	\$64	\$158

C HA PRIMEGUT 4493

02/07/14 17943466 Tattoo: 4493 Angus

TC Franklin 619
Vermilion Sirloin
Vermilion Lass 8482

HA Program 5652
HA Miss Blackcap 9127
HA Miss Blackcap 1250

GED	+9
BW	+1.9
WW	+72
YW	+121
Milk	+24

ActualBW	AdjWW	AdjYW	\$W	\$B
83	713	1338	\$71	\$148

D JINDRA ACCLAIM

01/13/14 17972810 Tattoo: 134 Angus

Jindra Double Vision
Jindra 3rd Dimension
Jindras Sapphire J417

Connealy Impression
Jindra Blackbird Lassy 1111
Jindras Enchantress J 102

GED	+6
BW	+0.9
WW	+72
YW	+146
Milk	+31

ActualBW	AdjWW	AdjYW	\$W	\$B
76	852	1577	\$71	\$222

€ VISION UNANIMOUS 1418

01/22/11 16992096 Tattoo: 1418 Angus

Gambles Royal Flush
Visiontopline Royal Stockman
LaGrand Pride 7140

Boyd On Target 1083
Vision Edella 665
Vision Edella 337

GED	+0
BW	+3.3
WW	+72
YW	+125
Milk	+15

ActualBW	AdjWW	AdjYW	\$W	\$B
84	902	1611	\$56	\$113

F BUBS SOUTHERN CHARM AA31

10/31/13 17853196 Tattoo: AA31 Angus

BT Crossover 758N
Silverias Conversion 8064
EXG Saras Dream S609 R3

Connealy Stimulus 8419
Hickory Hill Erica 009
Hickory Hill Erica TA32

GED	+4
BW	+3.1
WW	+67
YW	+113
Milk	+29

ActualBW	AdjWW	AdjYW	\$W	\$B
82	757		\$71	\$177



The Cowman's Formula

HOW MUCH CAN YOU AFFORD TO PAY FOR A TOP BULL?

Increase in pounds per calf from a top performance bull!

of cows bred to him per year \times # of years to keep the bull \times Expected selling price of calves
= Additional dollars you can pay for a better bull

EXAMPLE: A bull who will add 30 lbs. to the weaning weight of each of his calves mated to 25 cows per year for 4 years and you sell the calves for \$2.00 per pound

$$30 \text{ lbs per calf} \times 25 \text{ cows} = 750 \text{ lbs} \times 4 \text{ years} = 3000 \text{ lbs} \times \$2/\text{lb} = \$6,000$$

This bull is worth \$6,000 more than the average bull who will keep your weaning weights the same. Take this formula, put your own figures in and see what you can afford to pay. This equation does not consider the increase in value due to calving ease, higher quality replacement heifers, yearling growth, feedlot gain and carcass quality.

Your name
means everything.

We get it. Your brand is your legacy – what you fight for and work to leave behind. We're proud to stand by you with a spirit of innovation, a passion that runs as deep as yours and a guiding integrity that drives us to do what's right. For your operation and for you.

That's why Merck Animal Health Works.

Learn more at MAHCattle.com.



ZUPREVO **SafeGuard** **VAX** **Vision** **RALGRO**

merck-animal-health.com 888-621-4327
© 2019 Intervet Inc. All rights reserved. Merck Animal Health,
a subsidiary of Merck & Co., Inc. All rights reserved. 143411/02/19/001

*Special Thank You to Troy Warnken & Merck Animal Health
for providing us with our pre-sale dinner!*



MAY-WAY FARMS, INC.

1162 N 550 ROAD, BALDWIN CITY, KS 66006

WWW.MAYWAYFARMS.COM

May-Way Farms

NINTH ANNUAL PRODUCTION SALE

MARCH 14 2020

5:30 PM CST BALDWIN CITY, KS

